

your
STAYCATION
starts now

*stay-awhile stylings
for every space*

—FEATURING—

OUTDOOR ESTATE

INTRODUCING
**NEW SPRING
FABRICS**

PAGE 14

ETHAN ALLEN[®]

— WE MAKE A BEAUTIFUL HOME™ —

DIGITAL MAGAZINE SERIES



“Honoring our planet, preserving our communities, respecting the artisans who craft everything we make and sell—these principles are as fundamental to our definition of ‘quality’ as the handcrafted details that make our products so exceptional.”

FAROOQ KATHWARI
Chairman & CEO

DESIGNED *Delivered*

FOR MAXIMUM HAPPINESS

Welcome to the season where the world comes back to life. Soon, we'll be gathering together again in our homes and backyards, freed from those little boxes on a screen, no longer apart from the people who matter most.

Ethan Allen's **world-class interior design team** was made for this moment. We can help you choose a lamp or a rug, or give advice about fabrics and finishes. We can complete a small project—custom window treatments, a refresh that mixes new pieces with existing favorites—or create a top-to-bottom vision for a room or an entire home.

Known for defining and refining the great indoors, we're also peerless on the patio, divine on the deck, and spectacular in the sunroom. We work with you in the way that works for you: in the Design Center, in your home, or via virtual appointment, supported by powerful technology like our 3D Room Planner.

Then, on the day your new pieces arrive, our **Premier In-Home Delivery specialists** place each piece, assemble it, and take away every trace of packaging. They leave behind a place for gathering, for friendship, for laughter—the essence of happiness brought home.



NORTH AMERICAN MADE

OUR COMMITMENT TO

quality

NEVER TAKES
A VACATION

Seventy-five percent of Ethan Allen products are made in our North American workshops by artisans committed to the highest standards of quality.

Every piece of wood furniture we make comes from two sources: logs that we've milled in the Beecher Falls, Vermont, sawmill where our business began in 1932; or lumber that has been quality-checked by our inspectors in Old Fort, North Carolina, who are certified by the National Hardwood Lumber Association (NHLA).

Within our workshops, we still use the same durable mortise-and-tenon joinery that we've relied on for

more than 80 years, and we construct every drawer with dovetail joinery. We apply every finish by hand, using low-HAP and low-VOC coatings that keep the air clean from our workshops to your home.

The fabrics we use for our furniture are contract grade, meeting the same standards as fabrics you'll find in the hospitality industry. Tailored by hand over cushions filled with CertiPUR-US® certified foams, they combine durability and stain resistance with a flair for color and pattern.

The extra time we take to custom-craft your furniture ensures quality that will last a lifetime.



TRAVEL TO

country & coastal

Vermont-made furniture and hand-framed artwork serve up a year-round vacation home vibe.



ESCAPE TO

Classic

Hand-tufted upholstery, hand-painted florals, and a wool-and-sisal rug create a resplendent retreat.



SINK INTO
modern

Exceptional fabrics and hand-stitched details flawlessly balance fashion with comfort.



WHERE EVERY DAY IS

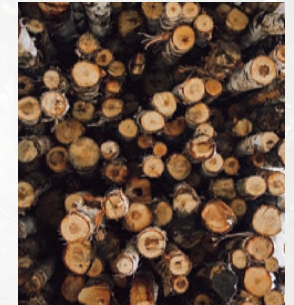
earth day

AND GREEN IS ALWAYS
COLOR OF THE YEAR

Fast furniture has its place; that place is not at Ethan Allen. We still make 75% of our products in our own North American workshops. In fact, many environmental innovations are spearheaded by the artisans who make your furniture. That's because we manage every process, from sketch to sample to finished piece.

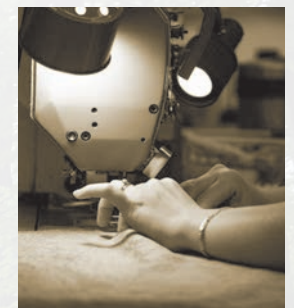
A WOOD FURNITURE WORKSHOP THAT RUNS PRIMARILY ON RENEWABLE ENERGY

Located in the heart of Vermont's Northeast Kingdom, our Orleans workshop burns recovered sawdust and wood chips to cogenerate electricity. A few years ago, one of our plant managers realized that by changing the conditions in which we stored our fuel, we could get twice as much energy from it.



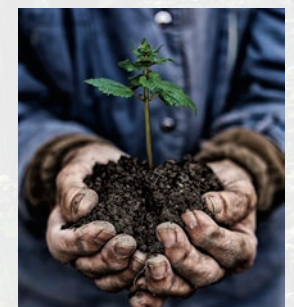
AN UPHOLSTERY WORKSHOP THAT KEEPS REUSABLE MATERIALS OUT OF LANDFILLS

At our upholstery workshop in Maiden, North Carolina, you'll find the Shrink Smart machine, invented by our plant manager in partnership with a trusted vendor. It custom-cuts the shrink wrap we use to package our furniture; so far, we've kept enough plastic out of landfills to stretch more than 75 miles.



A DELIVERY SYSTEM THAT KEEPS CARBON EMISSIONS UNDER CONTROL

Because we manage everything, including the delivery of our products, we can control our logistics to crush our carbon footprint. We use fuel-efficient technologies whenever possible, and we carefully route our vehicles to minimize the number of miles they drive.



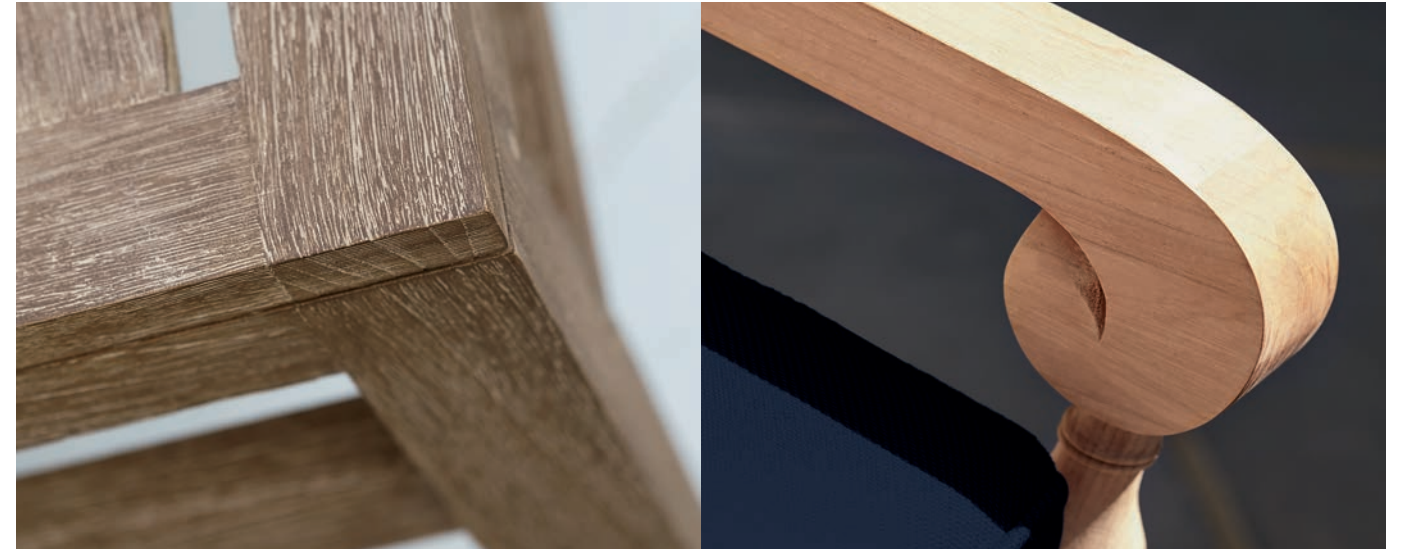
THIS EARTH DAY, WE'RE RENEWING OUR COMMITMENT TO CUTTING OUR CARBON FOOTPRINT, CONSERVING NATURAL RESOURCES, AND LEADING THE FIGHT AGAINST CLIMATE CHANGE.

ETHAN ALLEN®
**OUTDOOR
ESTATE**

FURNITURE AND ACCENTS FOR OUTDOOR LIVING



SUPERIOR CRAFTSMANSHIP



THE
details
MAKE THE
ETHAN ALLEN
DIFFERENCE

From every weld of frame to every stitch of fabric, we've designed **Outdoor Estate** for years of entertaining and enjoyment. Frames are crafted from sustainably harvested teak, all-weather wicker, or powder-coated aluminum, materials that exhibit exceptional durability and resistance to the elements.

Both easy to care for and easy to love, our outdoor fabrics stand up to fading and weather-related wear. Every cushion is tailored by hand, just like our indoor furniture, in a curated selection of custom fabrics and trims.

Speaking of curated—we've put together a few designer mood boards to help you find the perfect combinations of color and pattern. **They're only a taste of the delightful and durable fabrics you'll find online and in our Design Centers.**



CARIBBEAN *Cruise*

HUES OF DUNE GRASS, BLEACHED SANDS, AND THE OCEAN AT PLAY KEEP
A VACATION STATE OF MIND SAILING LONG AFTER THE SHIP HAS DOCKED.

Nature's palettes get along beautifully, which means they can travel anywhere. This mix of solids, ikats, and botanicals works equally well on seaside patios and in suburban backyards.





NOD HILL
IRRESISTIBLE MOTIFS IN
RUST-RESISTANT ALUMINUM

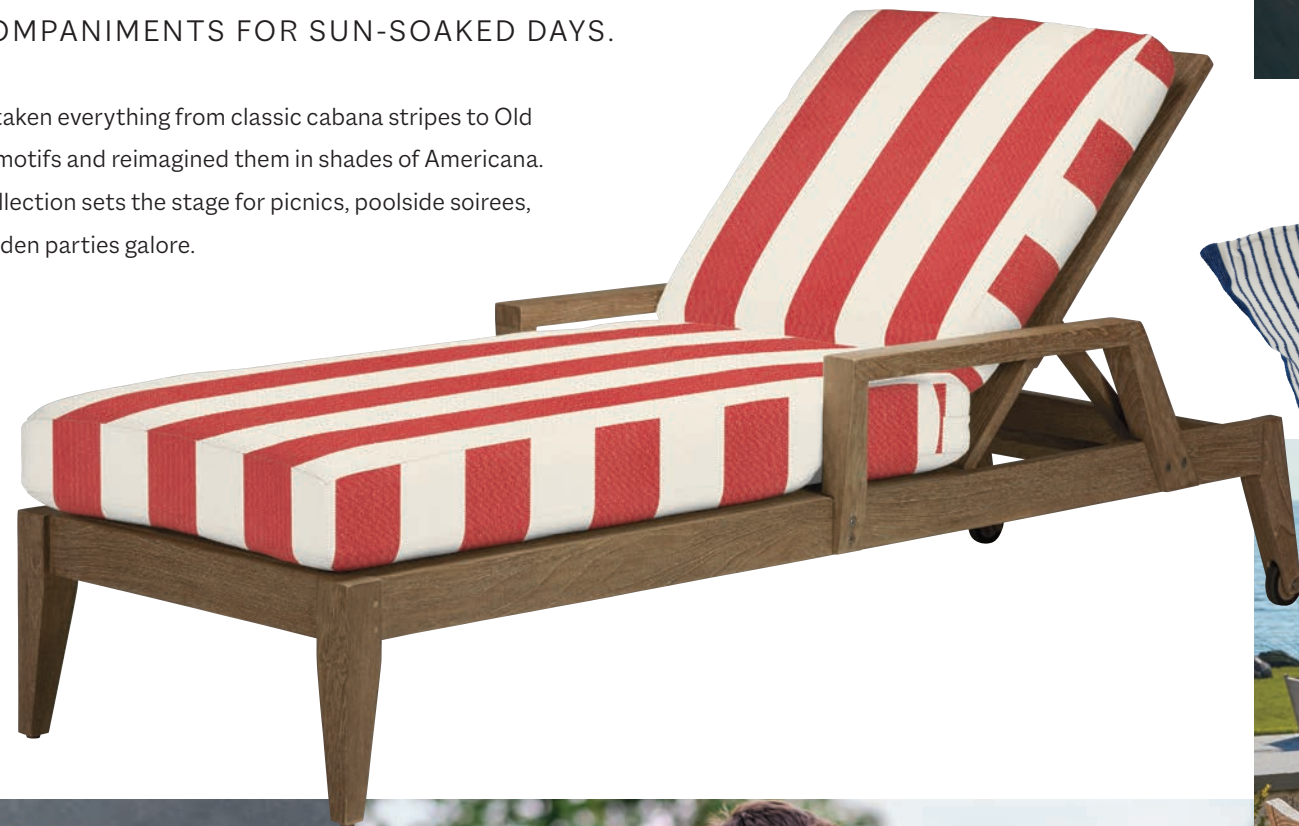


COMING
SOON
TO A
DESIGN CENTER
NEAR YOU!

AMERICAN *Summer*

MEMORIAL DAY, FLAG DAY, FOURTH OF JULY:
RED, WHITE, AND BLUE ARE CLASSIC
ACCOMPANIMENTS FOR SUN-SOAKED DAYS.

We've taken everything from classic cabana stripes to Old
World motifs and reimagined them in shades of Americana.
This collection sets the stage for picnics, poolside soirees,
and garden parties galore.





BRIDGEWATER COVE
MODERN AND CHIC IN SUSTAINABLE TEAK



COMING
SOON
TO A
DESIGN CENTER
NEAR YOU!

SALT & spray

FROM NATURE-PAINTED SKIES TO WHITE SANDY SHORES,
ANY KIND OF BLUE ALWAYS PAIRS BEAUTIFULLY WITH WHITE.

We took these simpático coastal complements and mixed and matched them in an array of patterns.
Versatile, contrasting stripes play beautifully with always-classic motifs, like the ageless palmette.





MILLBROOK
CLASSIC TURNINGS,
HEAD-TURNING GOOD LOOKS



COMING
SOON
TO A
DESIGN CENTER
NEAR YOU!



ISLAND *explorer*

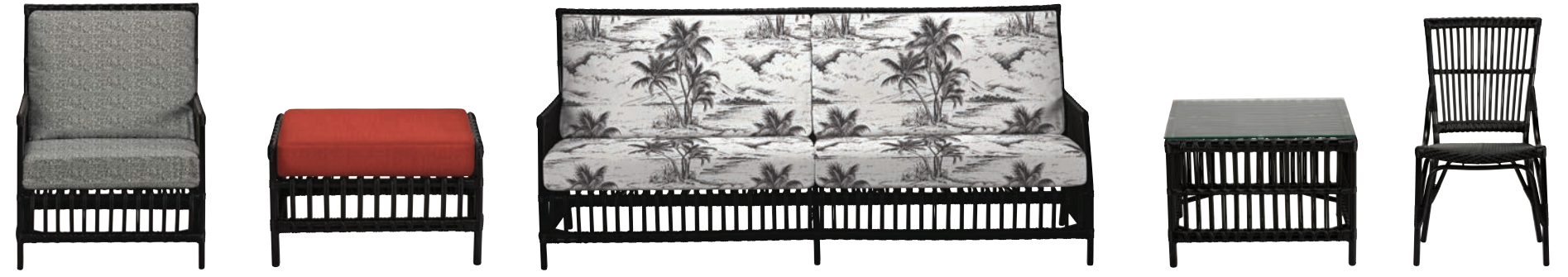
INSPIRED BY VINTAGE POSTCARDS AND INDIGENOUS FABRICS, BROUGHT HOME IN A WELL-TRAVELED, LOVINGLY WEATHERED SUITCASE.

Deep flame belongs with black and white, like the fire, obsidian, and ash that shape our island paradises. We expressed this palette in bold stripes, tropical patterns, and prints from ages past.





VERO DUNES
ALL-WEATHER WICKER,
ANY-WEATHER FASHION



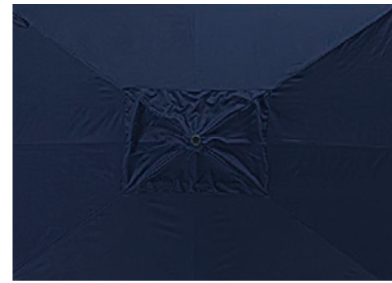
COMING
SOON
TO A
DESIGN CENTER
NEAR YOU!



COMPLEMENT WITH

*umbrellas
& rugs*

Weather-resistant fabrics and fibers make outdoor spaces livable from top to bottom.

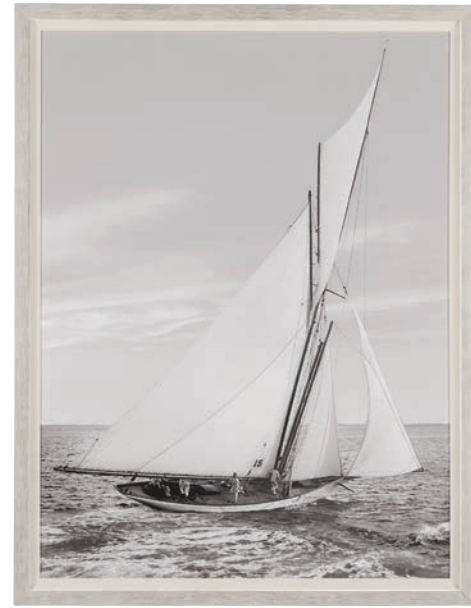




ACCENT YOUR
personal oasis

Hand-woven textures and hand-refined finishes enhance a space that nourishes the spirit.





EXPAND
YOUR
*artistic
horizons*

Natural landscapes, whether realistic or abstract, invite clarity to your mindscape.





MAKING ITS
fashionable
DEBUT

PICK UP YOUR FREE 2021 ETHAN ALLEN STYLE BOOK
IN A DESIGN CENTER TODAY!

All information is current as of April 1, 2021, and is subject to change without notice. We are not responsible for typographical errors. Please visit a Design Center for current information. Prices and services are optional for each retailer. All items may not be displayed at every Design Center. Final products may vary from display. Certain names and marks are proprietary and are owned by Ethan Allen Global, Inc.